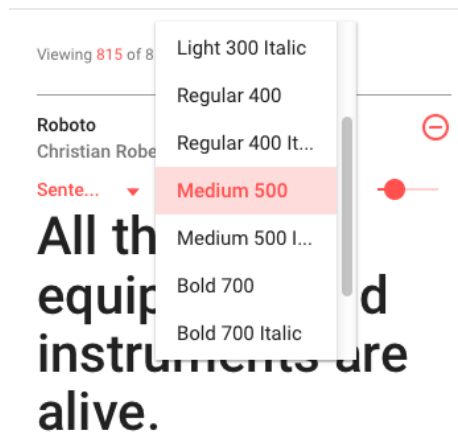
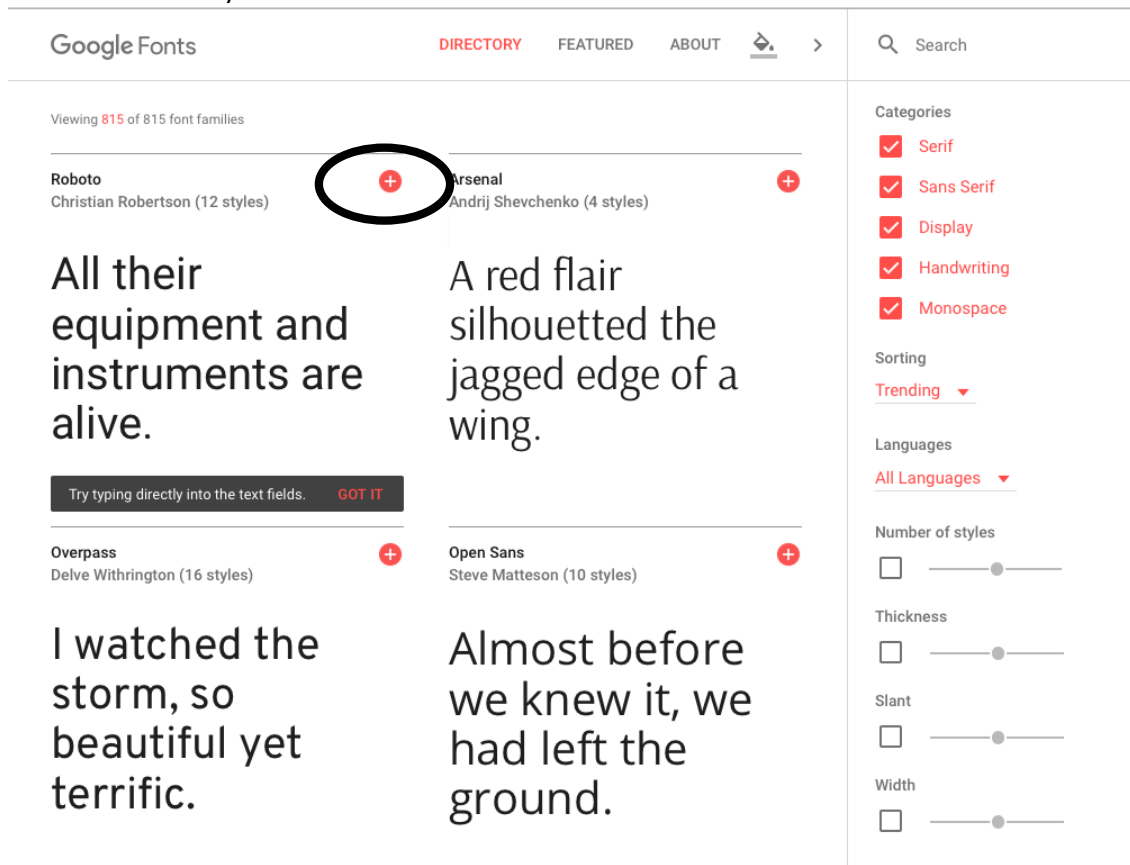


Google Web Fonts [\(https://fonts.google.com/\)](https://fonts.google.com/)

Choose a font that you want to use.



Choose the styles and weights you want to use . Click

Click the Add to Collection Button for each choice.

The following will appear at the bottom of your page. Click Use.

Click the – to expand.



Copy Embed Font code. Paste in the head tag under your <title>Title</title>

```
<link href="https://fonts.googleapis.com/css?family=Roboto:500,700" rel="stylesheet">
```

Specify in CSS

Copy font-family info and add it as a css rule. In the below example – all of the text in my file will switch from the default of Times to Roboto.

```
<style>
body
{
font-family: 'Roboto', sans-serif;
}
</style>
```

The screenshot shows a web interface for font selection. At the top, a dark header displays '1 Family Selected'. Below this, the 'Your Selection' section shows 'Roboto' with a minus sign icon and a 'Clear All' link. There are also share and download icons. The 'EMBED' tab is active, showing an 'Embed Font' section with instructions to copy code into the <head> of an HTML document. The code provided is: <link href="https://fonts.googleapis.com/css?family=Roboto:500,700" rel="stylesheet">. Below this, there are tabs for 'STANDARD' and '@IMPORT'. A 'Load Time' indicator shows 'Fast'. The 'Specify in CSS' section provides instructions to use CSS rules and shows the rule: font-family: 'Roboto', sans-serif;. A link to a 'getting started guide' is also present.

Add font-family description to css. In the below example, I'm adding it as my body text.